

Sensitives, Mediums, and Channelers

The background features a large, solid grey hexagon positioned on the right side. To the left of the hexagon, there are several overlapping, wavy, light grey lines that create a sense of motion and depth. The overall color palette is monochromatic, consisting of various shades of grey and white.

Sensitives

Sensitives are people who appear to have the facility to determine if a location is haunted, and sometimes, what types of discarnate consciousnesses are present, and their history.

The background features a large, solid grey hexagon positioned on the right side. From the left edge, numerous thin, white, curved lines flow towards the center, creating a sense of movement and depth. The overall color palette is light and airy, with soft gradients of white and light blue.

Mental Mediums

Mediums are people who purport to communicate with discarnate consciousnesses, passing along information to the still-living. During the heyday, of this religion, from 1840s to the 1920s, after-death communication took place in darkened seance rooms, giving unsavory characters a chance to prey on the beavered during sensational feats of spiritual interaction.

Mental mediums, also called *trance mediums*, would slip into trances, and allow their spirit guides, also known as **controls**, to speak through them, so fascinate communication between the deceased and the still-living.

Leonora Evelina Simonds Piper (1857 - 1950) was considered to be the most reliable of trance mediums. She was thoroughly investigated by multiple researchers from both the British and American Societies for Psychical Research.



Sources:

- 1) Schneider, Caitlin. "Leonora Piper, Turn-of-the-Century Medium ." Mental Floss, 21 Oct. 2016, www.mentalfloss.com/article/87380/retrobituaries-leonora-piper-turn-century-medium.
- 2) "Leonora Piper." Alchetron.com, 3 Mar. 2018, alchetron.com/Leonora-Piper.

Parapsychologist Richard Hodgson (1855 – 1905), who spent the most time with her, said that she wasn't always correct, but that her trances were verifiable, and most of her communications could be verified.



Source:

"Richard Hodgson (Parapsychologist)." Wikipedia, 20 Jan. 2021, [en.wikipedia.org/wiki/Richard_Hodgson_\(parapsychologist\)](https://en.wikipedia.org/wiki/Richard_Hodgson_(parapsychologist)).

The background features a large, solid grey hexagon on the right side. To the left of the hexagon, there are several overlapping, wavy, light grey lines that create a sense of depth and movement. The overall color palette is monochromatic, consisting of various shades of grey and white.

Physical Mediums

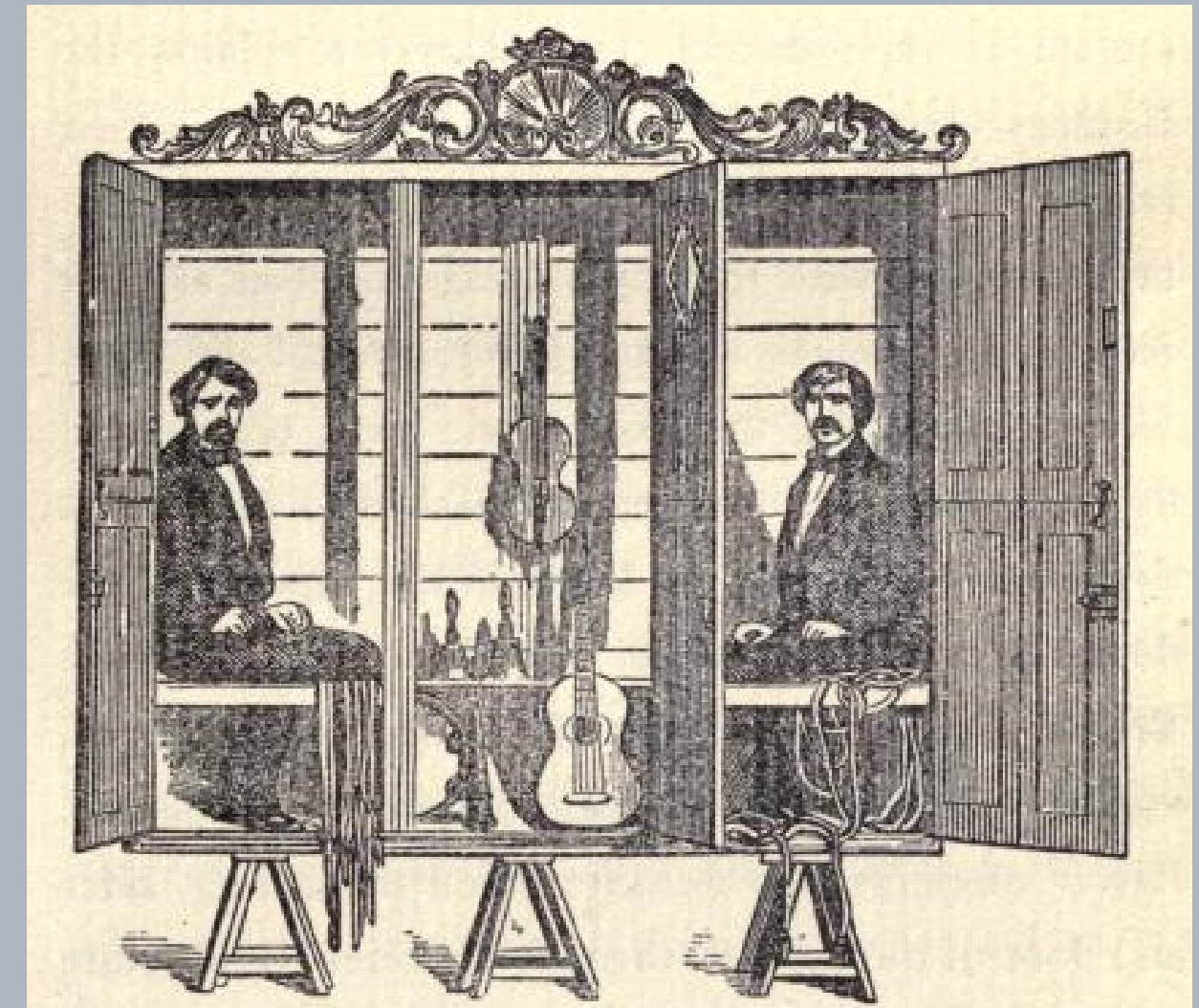
Physical mediums, did not offer much in the way of afterlife communication. Instead, they provided a sort of entertainment. In complete darkness, they would be tied up in "spirit cabinets", and would quickly escape. As the medium was changing into another outfit, helpers would sneak into the seance room and make it seem as if objects were moving.

The medium would then exit the cabinet, dressed as a spirit, only long enough for the sitters to catch a quick glimpse of the alleged apparition made corporal. With helpers again causing a distraction of what seemed to be spirit intervention, the medium would change back into their regular clothes, and then tie themselves back up.

With the helpers out of the seance room, the lights would go on, and the medium would be tied up in the cabinet, seemingly in a trance, and acting as if they were completely unaware of the alleged supernatural activity that took place over the evening.

The fact that there was singing, to "raise the vibrations", before and after the seance began, also covered up much of the noise that would have been made by the so-called medium and their helpers.

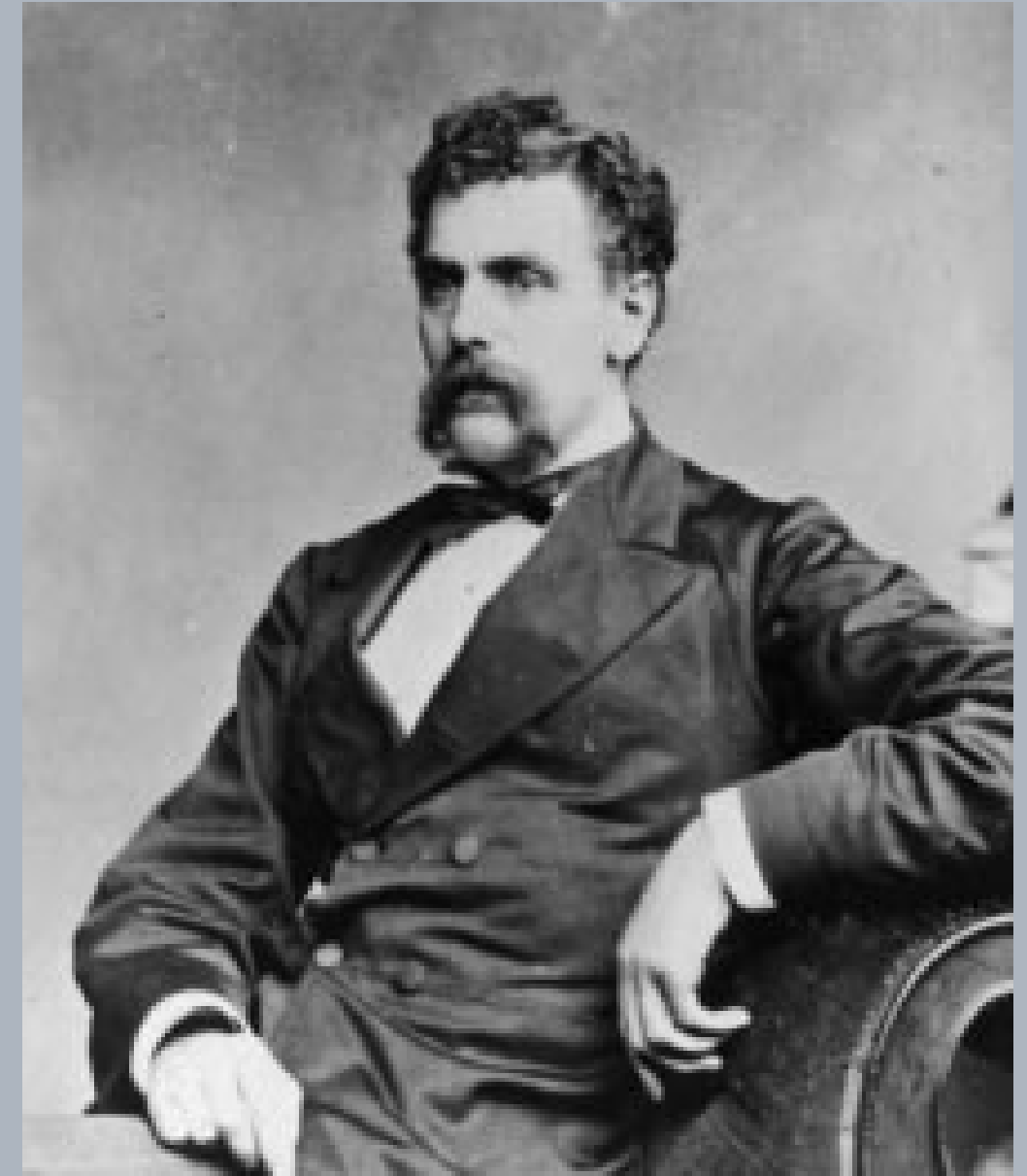
The "spirit cabinet" was popularized by The Davenport Brothers, Ira Erastus Davenport (1839 - 1911) and William Henry Davenport (1841 - 1877). They were exposed as escape artists many times.



Source:

"Davenport Brothers." Wikipedia, 17 Jan. 2021, en.wikipedia.org/wiki/Davenport_brothers.

Occasionally, writing slates would show alleged messages when the lights came on. These were trick boards popularized by Henry Slade (1840 - 1905), where the messages would be written on them prior to the seance.



Source:

Slate Writing. The Skeptic's Dictionary, 10 Sept. 2011, skepdic.com/slatewriting.html.

The most infamous, and fraudulent materialization medium was Florence Eliza Cook (1856 - 1904). She would pose as her "control", Katie King. At first allowing some parts of her seances to be photographed, she was later exposed, and no longer allowed researchers to investigate her seances.



Sources:

- 1) "Florence Cook." Wikipedia, 14 Feb. 2021, en.wikipedia.org/wiki/Florence_Cook.
- 2) "Katie King (Spirit)." Wikipedia, 16 June 2019, [en.wikipedia.org/wiki/Katie_King_\(spirit\)](https://en.wikipedia.org/wiki/Katie_King_(spirit)).

Ectoplasm is a viscous substance that allegedly exudes from the materialization mediums body, to take the form of spirits. The majority of the time, this was cheesecloth regurgitated by mediums during seances, or removed from more personal areas of the body that researchers would not examine.

Marthe Béraud (1886 - 1943), going by the stage name of Eva Carrière, was the most infamous of physical mediums to produce so-called ectoplasm. The images that appeared, however, were discovered to be cut out from magazines and newspapers.



Source:

"Eva Carrière." Wikipedia, 2 Oct. 2020, en.wikipedia.org/wiki/Eva_Carri%C3%A8re.

Examples of allegedly real ectoplasm were perplexing to researchers, and came to be called "ectenic force", believed to be some mysterious fluid that exuded from the medium's body to form fine, fabric-like tissue, that became a gelatinous type of matter that could take forms, or move objects. It was noticed that any bright light, sudden loud noise, or contact with ectoplasm could cause the ectoplasm to suddenly retract, and cause injury to the medium.

The background features a large, solid grey hexagon positioned on the right side. From the left edge, numerous thin, white, curved lines flow towards the center, creating a sense of movement and depth. The overall color palette is light and airy, with soft gradients of white and light grey.

Mixed Mediums

Mixed mediums displayed the characteristics of both mental and physical mediums. Most were fraudulent, but there were a few that, at times, seemed to actually possess the ability to communicate with the deceased, and produce psychokinesis (PK), which is the purported ability to move objects without actually touching them.

Eileen Jeanette Vancho Lyttle Garrett
(1893 - 1970) was always skeptical of
her own psychic facilities, so she
openly invited researchers and
investigators to attend her seances.
During one of these sittings,
something uncanny seemed to happen.



Sources:

- 1) "Eileen J. Garrett." Wikipedia, 15 Dec. 2020, en.wikipedia.org/wiki/Eileen_J._Garrett.
- 2) Karen, Author. "Eileen J. Garrett: Skeptical Medium." Spiritual Path Church, 2 Jan. 2019, www.spiritualpathspiritualistchurch.org/eileen-j-garrett-skeptical-medium/.

The tearful discarnate consciousness of Flight Lieutenant Herbert Carmichael "Bird" Irwin came through, recounting the crash of the R101, two days prior. Even if she had learned of this, she listed the exact order of failure of systems and the subsequent crash. This is information researchers were certain no one knew.



Sources:

- 1) "Eileen J. Garrett." Wikipedia, 15 Dec. 2020, en.wikipedia.org/wiki/Eileen_J._Garrett.
- 2) "R101." Wikipedia, 4 Feb. 2021, en.wikipedia.org/wiki/R101.

Victoria Helen McCrae Duncan (1897 - 1956) was known to fake phenomenon to continue making money to support her very large family, even going so far as to make paper mache "materializations". But, it appeared to many investigators that she actually had the psychic facilities to communicate with the deceased.



Source:

"Eva Carrière." Wikipedia, 2 Oct. 2020, en.wikipedia.org/wiki/Eva_Carri%C3%A8re.

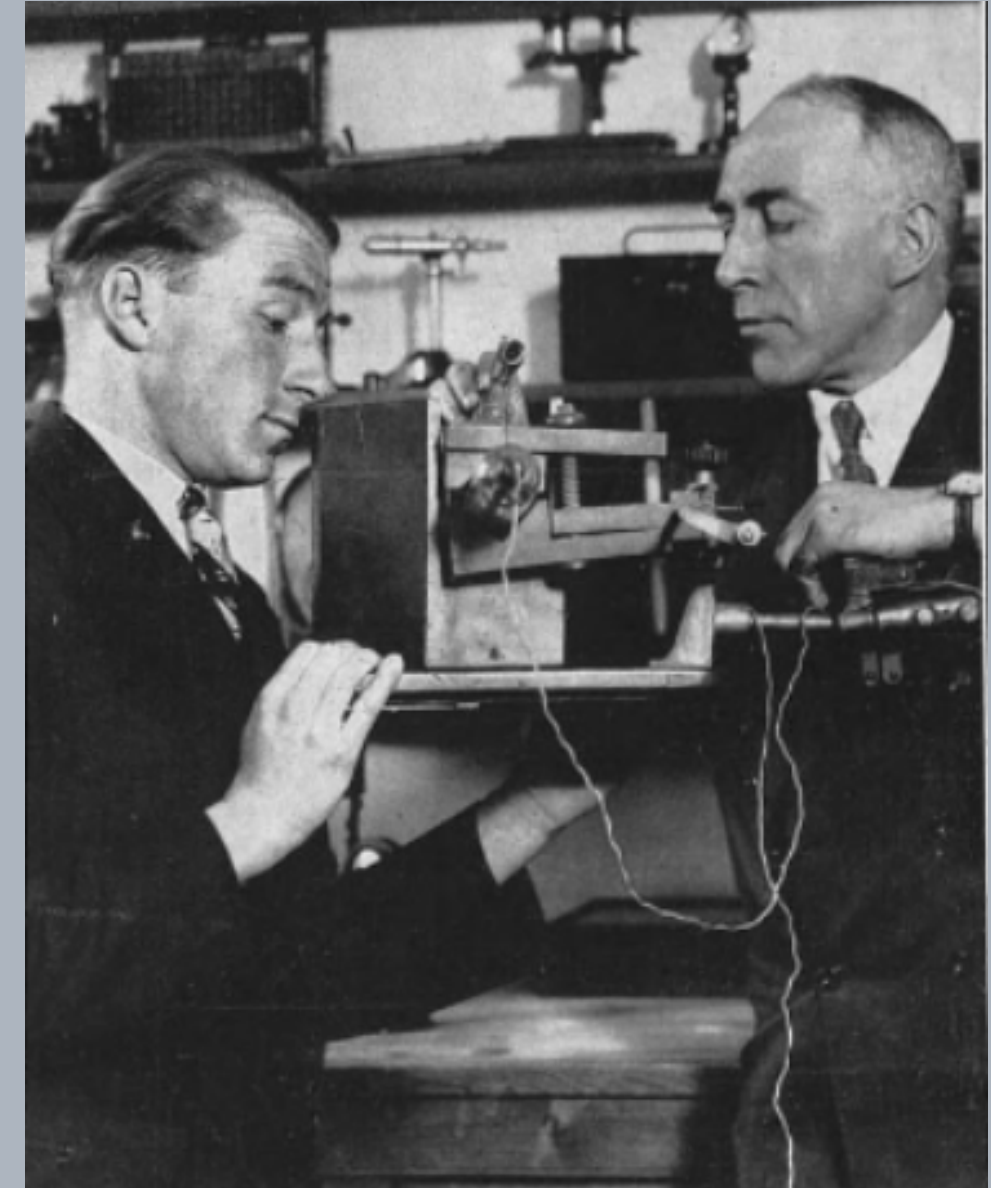
During a seance in November, 1941, she revealed to sitters that the HMS Barham had been sunk. Since this was during World War II, this information was kept strictly confidential until January 1942. Yet, she was able to recount many of the details. As such, she was put on trial, and acquitted, for espionage.



Source:

"HMS Barham (04)." Wikipedia, 10 Jan. 2021, [en.wikipedia.org/wiki/HMS_Barham_\(04\)](https://en.wikipedia.org/wiki/HMS_Barham_(04)).

Not all cases of materializations were fraudulent. Under the strictest controls by psychic researcher Harry Price, Rudi Schneider (1908 - 1957). One more than one occasion, he would slip into trance, and his spirit control, Olga, would create activity. Often, phantom penises would appear, and float around the room, during his seances.



Source:

"HMS Barham (04)." Wikipedia, 10 Jan. 2021, [en.wikipedia.org/wiki/HMS_Barham_\(04\)](https://en.wikipedia.org/wiki/HMS_Barham_(04)).

If Eusapia Palladino (1854 - 1918) wasn't completely restrained by a number of researchers and investigators all at once, she would resort to trickery to pull off her physical phenomenon. While restrained, however, she produced PK.



Source:

"Eusapia Palladino." Wikipedia, 4 Jan. 2021, en.wikipedia.org/wiki/Eusapia_Palladino.

In one instance, her seance was moved into the driveway, in the middle of the day, and she was retrained by multiple men. Astonishingly, the table levitated in front of everyone, with no explainable reason.



Source:

"Eusapia Palladino." Wikipedia, 4 Jan. 2021, en.wikipedia.org/wiki/Eusapia_Palladino.

The Philip Experiment was spearheaded by Dr. Alan Robert George Owen, in Toronto, Ontario, in 1972, based on the assumption that all physical manifestations were psychokinesis in nature. The participants did not sit in a darkened room, and were able to reproduce many of the physical effects, such as moving objects, tapping and popping noises, etc., as earlier mediums, without the need for spirit intervention.

Source:

Owen, Iris M., and Margaret Sparrow. *Conjuring Up Philip: An Adventure in Psychokinesis*. Harper & Row, 1976.

The background features a large, solid grey hexagon positioned on the right side. From the left edge, numerous thin, white, curved lines flow towards the center, creating a sense of movement and depth. The overall color palette is light and airy, with soft gradients of white and light grey.

Psychic Mediums



Between 2001 and 2007,
John Edward McGee Jr.,
and Sylvia Celeste
Browne (1936 - 2013)
captured the attention
of audiences with claims
of afterlife
communication.



Sources:

- 1) "John Edward." Wikipedia, 10 Feb. 2021, en.wikipedia.org/wiki/John_Edward.
- 2) "John Edward." Alchetron.com, 27 Feb. 2018, alchetron.com/John-Edward.
- 3) "Sylvia Browne." Wikipedia, 24 Jan. 2021, en.wikipedia.org/wiki/Sylvia_Browne.
- 4) Gonzalez, John. "Sylvia Browne's 2012 Predictions, and Her Claim Steve Jobs Was Someone Famous in Another Life." Mlive, 23 Jan. 2012, www.mlive.com/entertainment/2012/01/sylvia_brownes_2012_prediction.html.

Psychic mediums, such as these two, do not need to slip into trance to allow a control to communicate with discarnate consciousnesses, nor do they produce physical phenomenon. Also, they seem more adept, allegedly, at predicting future events.

As with mediums from the past, there are many frauds who claim to have this psychic facility.

Observation by more skeptical minds have uncovered some of the more common methods the fraudulent ones use to trick people out of their money.

In the digital age, it's very difficult for a person's information to be kept completely private. Fraudulent psychic mediums make use of this information. It is called hot reading.

Cold reading is a technique whereby the fraudulent medium makes assumptions based on the sitter's appearance, analyze facial features, tone of voice, and body language.

The high-probability guesses employed in cold reading include:

Barnum Statements are statements that can apply to almost anyone, for instance:

- You have the tendency to be critical of yourself.
- Sometimes, you feel insecure.
- Sometimes, you are very social, and at other times, you're more reserved.

The Rainbow Ruse, where the mediums uses simple statements to validate what the sitter already believes about themselves, for instance:

- Most of the time, you're cheerful, but in the past, you've been upset.
- You're a very nice person, but when someone breaks your trust, you can get angry.
- Sometimes you are quiet and shy, but other times, you're very outgoing and sociable.

Another method of convincing sitters is shotgunning. This is when a medium speaks very quickly, making a lot of vague statements that they say will make sense later. Inevitably, the fraudulent medium will preface a sitting by telling the customer that the speed is due to how fast "spirits" provide information.

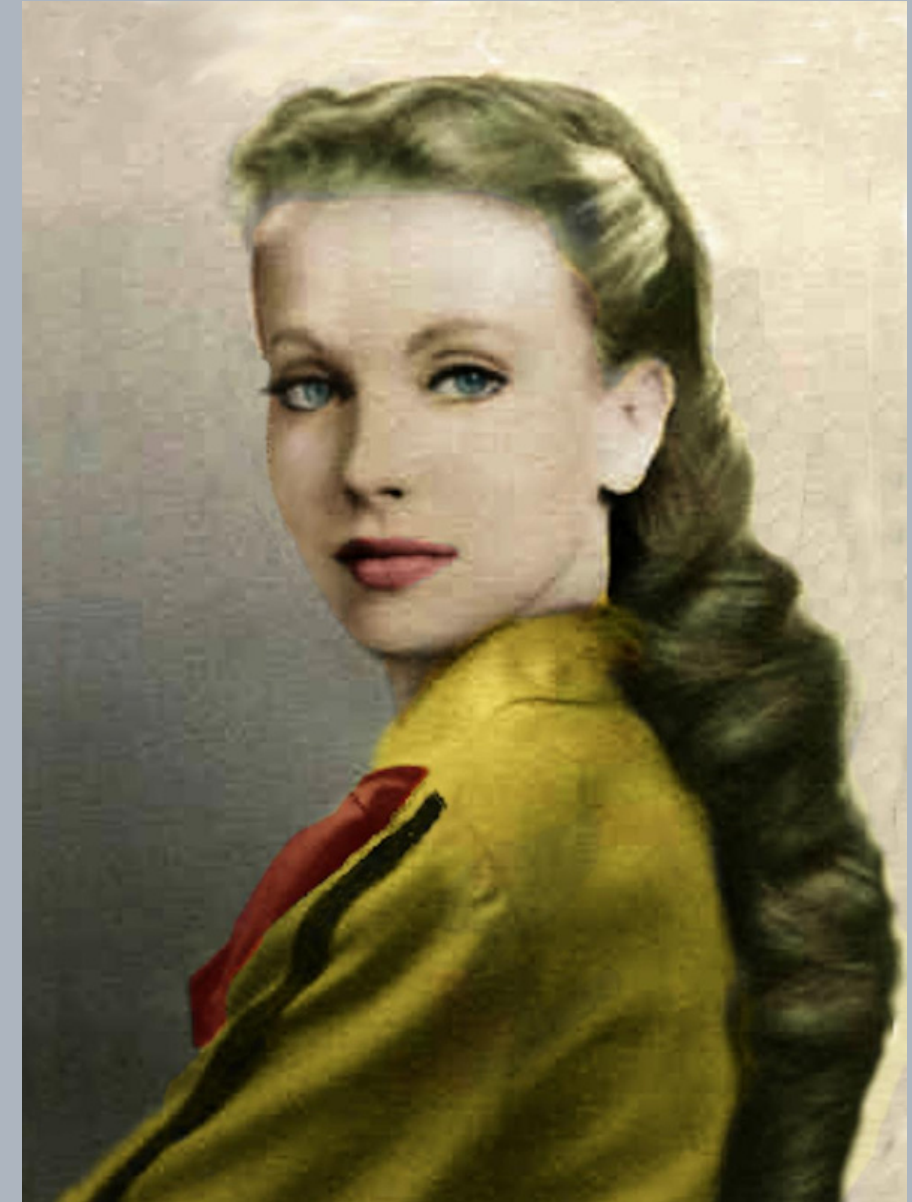
The background features a large, solid grey hexagon positioned on the right side. From the left edge, numerous thin, white, curved lines flow towards the center, creating a sense of movement and depth. The overall color palette is light and airy, with soft gradients of white and light grey.

Channelers

Channeling is not a new concept, but in the mid-1980's, it became as much as a phenomenon as psychic mediums.

Channellers do not pass along information from the deceased, or create physical manifestations. Instead, they channel personalities, most often for profit.

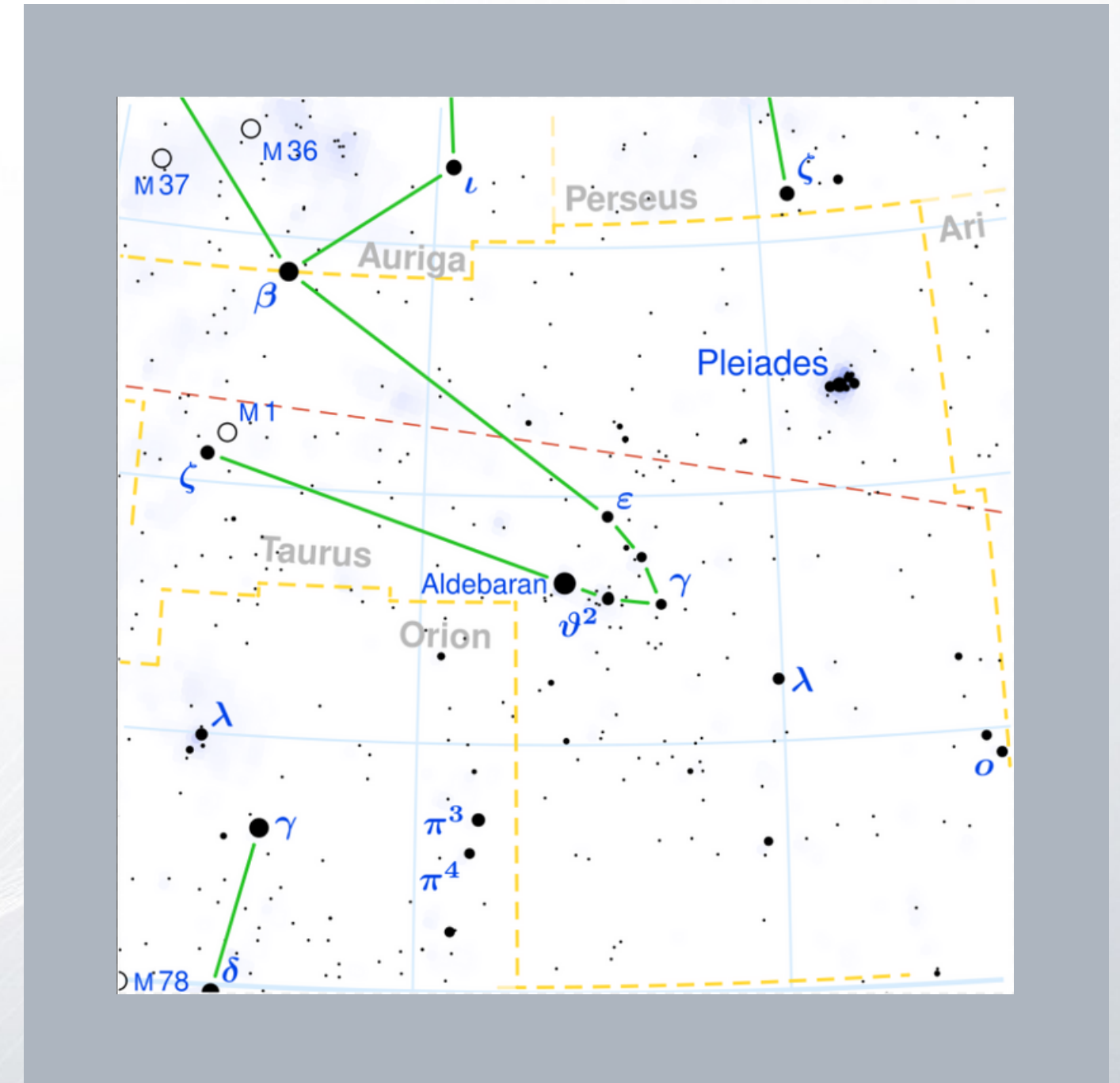
Maria Orsic was a German nationalist after World War I, and after coming to the attention of the Thule Society, an occult society sponsored by the National Socialist German Workers' Party, who would later become the Nazi Party, and created her own group, the Vril Society, based on the name of a fictional book that proposed an all-Aryan, subterranean race of ascended masters.



Sources:

- 1) Vril Society Maria Orsitsch, 1stmuse.com/maria_orsitsch/.
- 2) Hinson, William A. Castle Werfenstein and the Wonder Women of Vril: Maria Orsic and the Beings of Light. 2017.
- 3) "Maria Orsic." IMDb, www.imdb.com/name/nm9856646/.

During seances, she came to believe that she was in contact with Aryan aliens living on Alpha Centauri, in the Aldebaran system. In 1919, Thule and Vril Society members joined with members of the Order of the Black Sun, later identified as the elite of Heinrich Himmler's SS, and began channeling "flying ship" information from the alleged telepathic entities from a planet orbiting the Aldebaran star system.



Sources:

- 1) Vril Society Maria Orsitsch, 1stmuse.com/maria_orsitsch/.
- 2) Hinson, William A. Castle Werfenstein and the Wonder Women of Vril: Maria Orsic and the Beings of Light. 2017.
- 3) "Aldebaran." Wikipedia, 4 Jan. 2021, en.wikipedia.org/wiki/Aldebaran.

Allegedly, Maria was able to channel blueprints for what would later be discovered to be problematic "flying saucers", that would continually be approved on, during World War II.



Sources:

1) Vril Society Maria Orsitsch, 1stmuse.com/maria_orsitsch/.

2) Hinson, William A. Castle Werfenstein and the Wonder Women of Vril: Maria Orsic and the Beings of Light. 2017.

3) "Pin on Covanants." Pinterest, www.pinterest.com/pin/577657089702904502/.

Judith Darlene Hampton, going under the stage name J. Z. Knight, claims to channel a personality called Ramtha, a Lemurian warrior who fought the Atlanteans over 35,000 years ago. She has made millions through her Ramtha's School of Enlightenment, which promises spiritual truths and elevation of consciousness through her channeling.



Sources:

- 1) "J. Z. Knight." Wikipedia, 3 Feb. 2021, en.wikipedia.org/wiki/J._Z._Knight.
- 2) Burgos, John. "JZ Knight on Beyond The Ordinary Show." JZ Knightcom, 22 Feb. 2017, www.jzknights.com/2017/02/.

The background features a large, solid grey triangle on the left side, pointing towards the top-left. The rest of the background is filled with a complex pattern of thin, light grey wavy lines that create a sense of motion and depth. The overall color palette is monochromatic, consisting of various shades of grey and white.

© Justin H. Guess All Rights Reserved